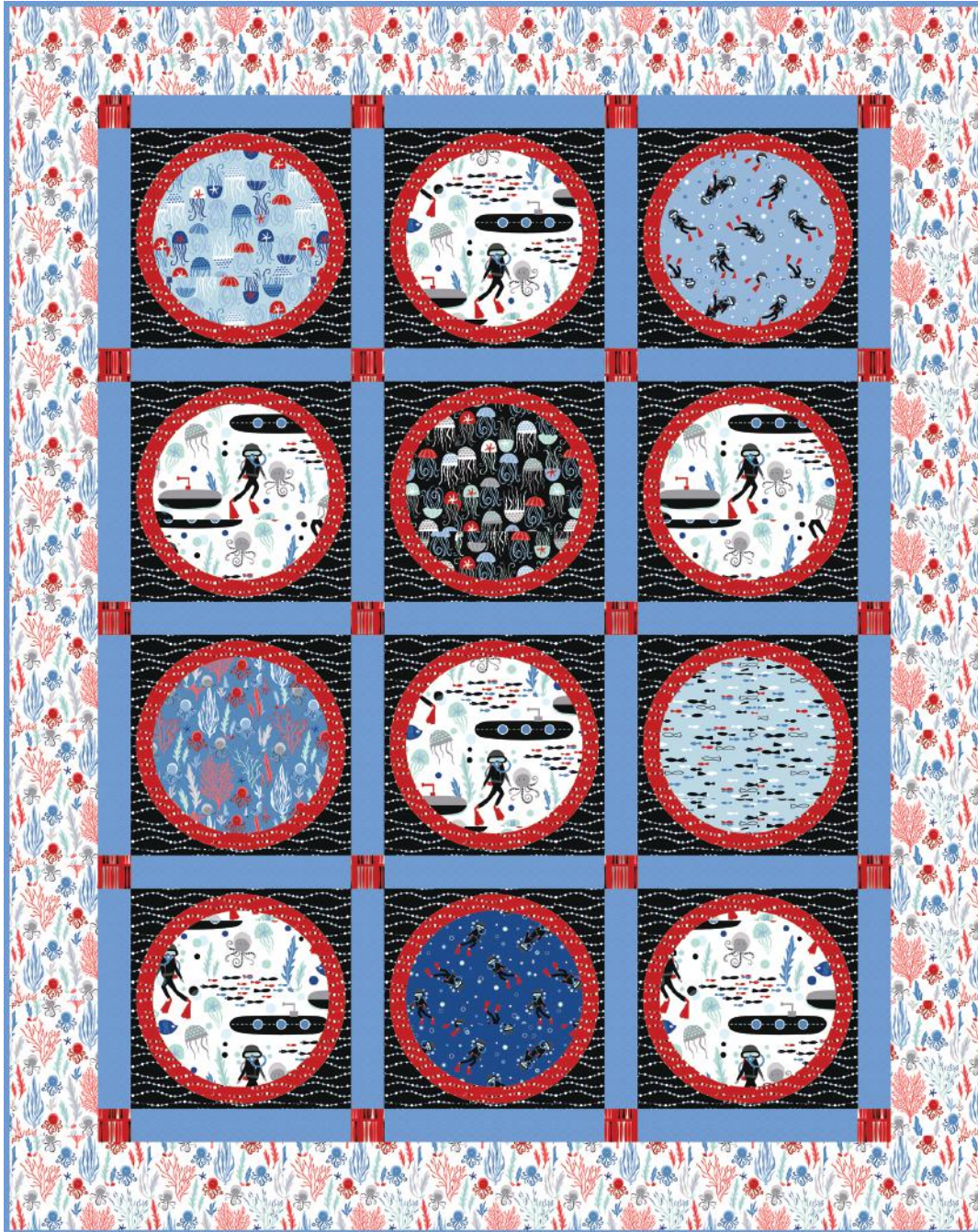


Come Dive with Me

Designed by Heidi Pridemore
Featuring the Longfellow Collection by Whistler Studios
Size: 44" x 55 1/2"



Check www.windhamfabrics.com Free Project section to see if there are any pattern updates before you start your quilt project



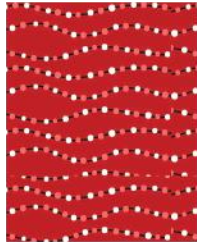
812 Jersey Ave – Jersey City, NJ 07310 – 201.659.0444 ~ FAX: 201.659.9719
www.windhamfabrics.com email: retail@windhamfabrics.com

Come Dive with Me

Page 2



41656-1 Light Blue



41660-5 Red



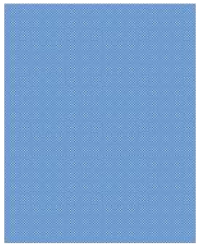
41655-X Multi



41656-2 Black



41658-1 Light Blue



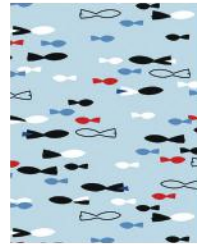
40171-09 Blue Aqua



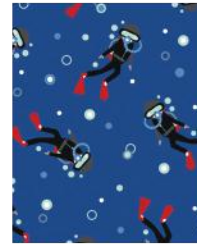
41661-5 Red



41657-1 Light Blue



41659-1 Light Blue



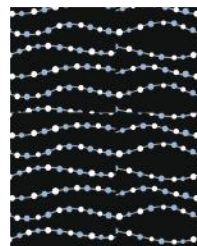
41657-3 Blue

Estimated Fabric Requirements:

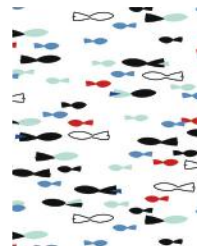
- 1/3 yard – 41656-1 Light Blue
- 7/8 yard – 41660-5 Red
- 5/8 yard – 41655-X Multi
- 1/3 yard – 41656-2 Black
- 1/3 yard – 41658-1 Light Blue
- 1 yard – 40171-09 Blue Aqua
- 1/8 yard – 41661-5 Red
- 1/3 yard – 41657-1 Light Blue
- 1/3 yard – 41659-1 Light Blue
- 1/3 yard – 41657-3 Blue
- 1 1/2 yards – 41658-4 White
- 1 1/4 yards – 41660-2 Black
- 3 yards – 41659-4 White



41658-4 White



41660-2 Black



41659-4 White

You will also need:

- Fusible web



WINDHAM FABRICS

www.windhamfabrics.com

Come Dive with Me

Page 3

Cutting Instructions:

Fabric A: Jellyfish – Light Blue

- Cut one 8 ½" diameter circle.

Fabric B: Wavy Lines – Red

- Cut twelve 8 ½" diameter rings.

Fabric C: Underwater Scene – Multi

- Cut six 8 ½" diameter circles.

Fabric D: Jellyfish – Black

- Cut one 8 ½" diameter circle.

Fabric E: Octopus – Light Blue

- Cut one 8 ½" diameter circle.

Fabric F: Artisan Cotton – Blue Aqua

- Cut eight 2" x WOF strips. Sub-cut the strips into thirty-one 2" x 10 ½" strips.
- Cut six 2 ½" x WOF strips for the binding.

Fabric G: Lines – Red

- Cut one 2" x WOF strip. Sub-cut the strip into twenty 2" squares.

Fabric H: Divers- Light Blue

- Cut one 8 ½" diameter circle.

Fabric I: Fish – Light Blue

- Cut one 8 ½" diameter circle.

Fabric J: Divers – Blue

- Cut one 8 ½" diameter circle.

Fabric K: Octopus – White

- Cut two 4 ½" x 48" LOF strips.
- Cut two 4 ½" x 44 ½" WOF strips from the remaining fabric, piece as needed.

Fabric L: Wavy Lines – Black

- Cut three 10 ½" x WOF strips. Sub-cut the strips into twelve 10 ½" squares.

Backing: Fish – White

- Cut two 52" x WOF strips. Sew the strips together and trim to 52" x 64" for the pieced back.



WINDHAM FABRICS

www.windhamfabrics.com

Come Dive with Me

Page 4

Block Assembly:

1. Following the manufacturer's instructions, trace the listed number of each template onto the paper side of the fusible web. Roughly cut out each template about $\frac{1}{8}$ " outside the drawn lines.
2. Press each template onto the wrong side of the fabrics as listed on the templates. Cut out each template on the drawn lines.
3. Refer to the quilt photo to arrange and press one $8\frac{1}{2}$ " diameter Fabric C circle on one $10\frac{1}{2}$ " Fabric L square to make one C block (Fig. 1).

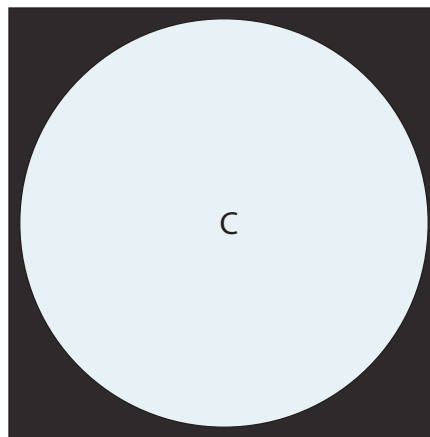


Fig. 1

4. Press one $8\frac{1}{2}$ " Fabric B ring onto the C block to make one Block (Fig. 2). Repeat with the remaining assorted $8\frac{1}{2}$ " circles, Fabric B rings and Fabric L squares to make twelve Blocks total.

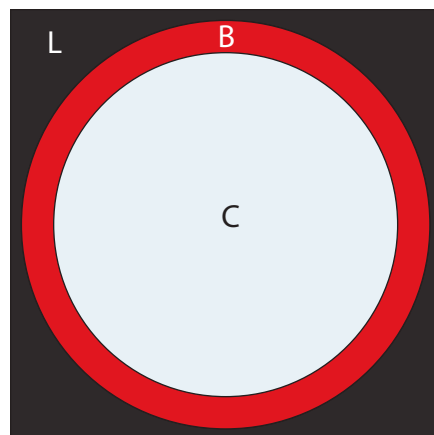


Fig. 2

For Center Fabric:
Make (6) Fabric C
Make (1) Fabric A
Make (1) Fabric D
Make (1) Fabric E
Make (1) Fabric H
Make (1) Fabric I
Make (1) Fabric J

5. Finish the raw edges of each shape with a decorative stitch such as a buttonhole or satin stitch.



WINDHAM FABRICS

www.windhamfabrics.com

Come Dive with Me

Page 5

- Sew (4) 2" Fabric G squares and (3) 2" x 10 ½" Fabric F strips together end to end, alternating them, to make one sashing strip (Fig. 3). Repeat to make five sashing strips total.

Make 5



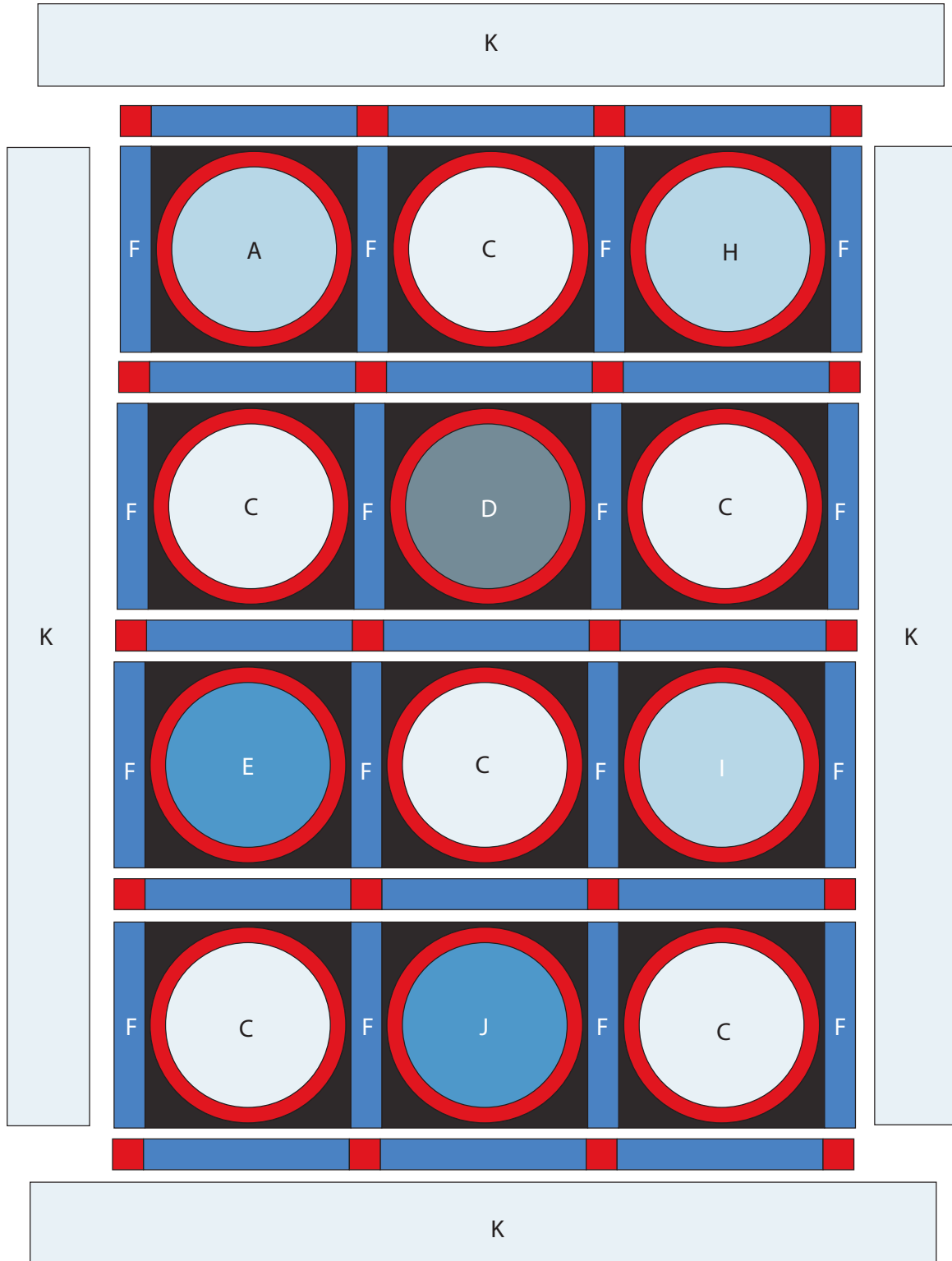
Fig. 3

Quilt Assembly – Refer to the Quilt Layout while assembling the quilt top:

- Sew four 2" x 10 ½" Fabric F strips and three Blocks together to make one row. Repeat to make four rows total.
- Sew the five sashing strips and four rows together, alternating them, to make the quilt top.
- Sew one 4 ½" x 48" Fabric K strip to each side of the quilt top. Sew one 4 ½" x 44 ½" Fabric K strip to the top and to the bottom of the quilt top.
- Layer and quilt as desired.
- Sew the six 2 ½" x WOF Fabric F strips together, end to end with 45-degree seams, to make the binding. Fold this long strip in half, lengthwise with wrong sides together, and press.
- Bind as desired.

Come Dive with Me

Page 6



Quilt Layout



WINDHAM FABRICS

www.windhamfabrics.com

Come Dive with Me

Page 7

Enlarge Template 200%

Trace 12 Total

- (6) Fabric C
- (1) Fabric A
- (1) Fabric D
- (1) Fabric E
- (1) Fabric H
- (1) Fabric I
- (1) Fabric J

Trace 12
Fabric B

Enlarge Template 200%

**Be sure to visit www.windhamfabrics.com
to see the complete collection and to
download this and other FREE Projects**



WINDHAM FABRICS

www.windhamfabrics.com